



# **3 Volt Adapter 8-cable**

## **User Manual**

Version 3.0

January 2000

 **GRAMMAR ENGINE INC.**

921 Eastwind Drive, Suite 122, Westerville Ohio 43081  
(614) 899-7878 Voice (614) 899-7888 Fax

[www.promice.com](http://www.promice.com)

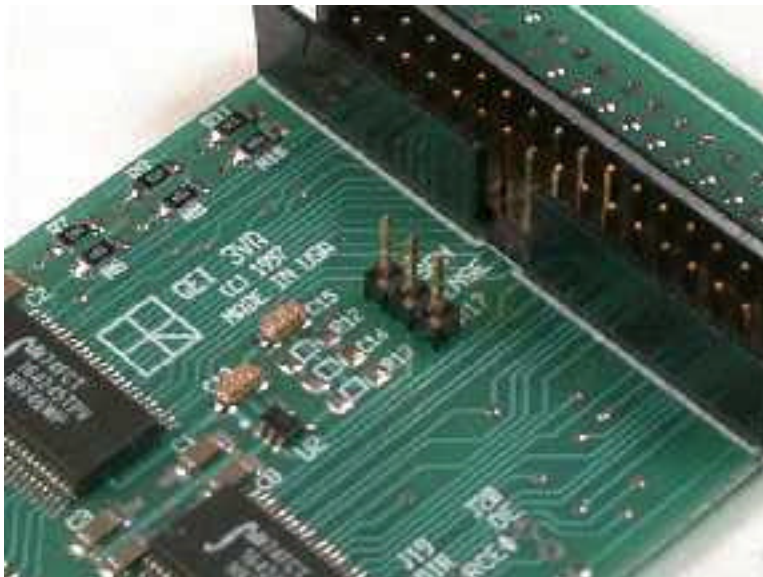
© 1999 Grammar Engine Inc.

## Introduction

Grammar Engine provides four versions of 3 Volt Adapters. These adapters are designed to connect to the adapters boards included in our ROM cable assemblies. For each data width (8 or 16), one version connects to the adapter board via ribbon cables and the other attaches directly to adapter board, piggy-back style.

Adapter	Bus width	Connection Type	Adapters / Cables supported
<b>3VA16-DC</b>	8 / 16 Bit	Direct	PL44 DIP4042B,DIP40C TSOP <sub>xx</sub> PSOP <sub>xx</sub>
<b>3VA16</b>	8 / 16 Bit	Cable	DIP28, DIP32 PL32C, PL32S DIP40
<b>3VA8-DC</b>	8 Bit	Direct	PL32E 8 bit TSOP <sub>xx</sub> 8 bit PSOP <sub>xx</sub>
<b>3VA8</b>	8 Bit	Cable	DIP28, DIP32 PL32C, PL32S

## Set Jumpers on the 3VA

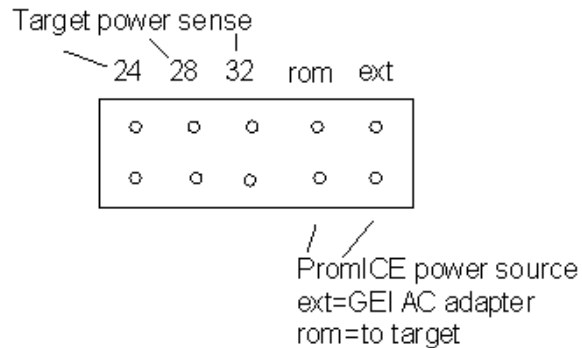


Connect:  
3VSEN to  
VSENSE

Except for DIP28  
Connect:  
VSENSE to  
RA17

Does not support DIP24.

## Set Jumpers on the PromICE back panel



Always use external power by keeping a jumper on the **ext** pins. Use the supply shipped with that PromICE. Place a jumper on the **32** pins when connecting the 3 volt adapter.

The **rom** jumper should only be used when connecting a 3 volt adapter (or to parasitically power a small, low power target). Use the spare jumper with a long handle that ships with the 3 volt adapter. This spare jumper is located on one of the **write** pins, as shown on the top edge of the picture on the 3V16 detail page.

**NOTE** All 3 Volt adapters require that a jumper be placed across the **rom** pins in order to provide power to the adapter board.

## Translating the Target Write Line

When connecting the target write line to PromICE, the **write** pins on the 3 volt adapter are provided to translate the target write line voltage. The **write** pins are shown with the spare jumper on the 3V16 detail page. For connection instructions, see the *PromICE User Manual*.

## On Connecting the Reset and Interrupt Lines

**Note:** When connecting the PromICE Reset and Interrupt output lines, the lines can be connected without translation only if they are low-asserted. If they are high-asserted, you must provide your own hardware to convert from 5 to 3 volts. See the *PromICE User Manual* for connection instructions.

Bus width: 8 Bit

Connection type: Cable connects to adapter board.

Jumper setting: RA17 - VSENSE, DIP28 only  
3VSEN - VSENSE, all other adapter boards

Adapters

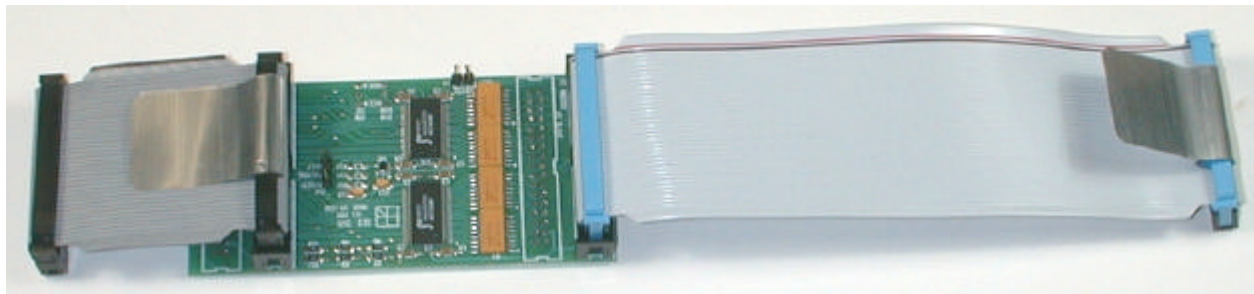
supported:

DIP28

DIP32

PL32C

PL32S



To adapter board or target

To PromIce